

Caution:

Don't mark on the phantom with pen or leave printed materials contacted on its surface.
Ink marks on the phantom will be irremovable.

US-6

Breast Ultrasound Examination Phantom

"BREAST FAN"

Instruction Manual

Contents

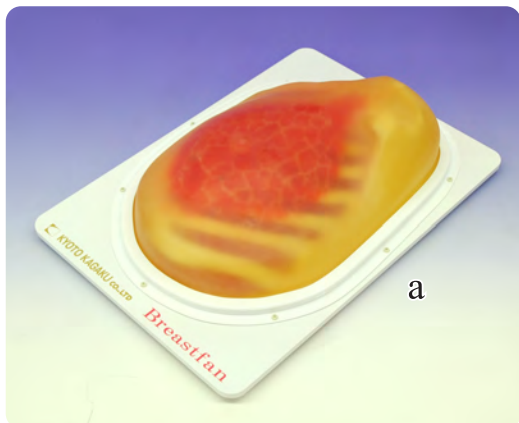


- Please read before training
 - General information P. 1
- Preparation
 - 1 Before training P. 2
- Training
 - 2 Training session P. 2
 - 3 After training P. 2

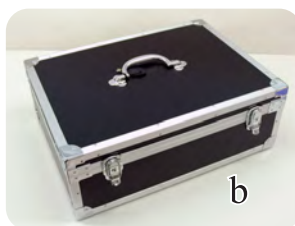
The BREASTFAN is a unique phantom for training in basic breast ultrasound examination. Simulated targets with different echogenicities are embedded in the phantom mammary gland. In this phantom you may visualize the following: the subcutaneous adipose, the mammary gland, the galactophore, Cooper's ligament, the retromammary adipose, the costae, the clavicle, the pectoralis major, the lung, and the lymph nodes at axilla.

Set includes

Before your first use, please ensure that you have all components listed below.



- a. Breast phantom 1
- b. Carrying case 1
- c. DVD Tutorial Manual 1
- Instruction manual (this leaflet) 1



⚠ DOs and DON'T s

DO s

Handle with care

The materials for phantom and models are special composition of soft resin. Please handle with care at all times.

Cleaning and care

Please clean the phantom completely every time after you finish the training. The remaining lubricating gel may deteriorate the phantom.

Keep the training set at room temperature, away from heat, moisture and direct sunlight.

DON'T s

Never wipe the phantom or models with thinner or organic solvent.

Don't mark on the phantom with pen or leave printed materials contacted on their surface. Ink marks on the models will be irremovable.

Please note: The color of the phantom may change over time, though, please be assured that this is not deterioration of the material and the ultrasonic features of the phantom stay unaffected.

This phantom has a thin layer of coating for protective purposes which may cause minor wrinkling. However, it has no effect on the ultrasound image.

Preparation Training

1 Before training



1. Set the phantom on the stable place.



2. Spread lubricant gel on the phantom body.

2 Training session



The phantom can be scanned with actual ultrasound devices.

* The map of simulated targets is on the backside of this manual.

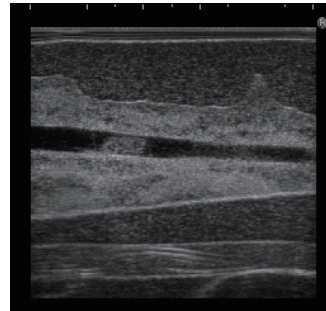
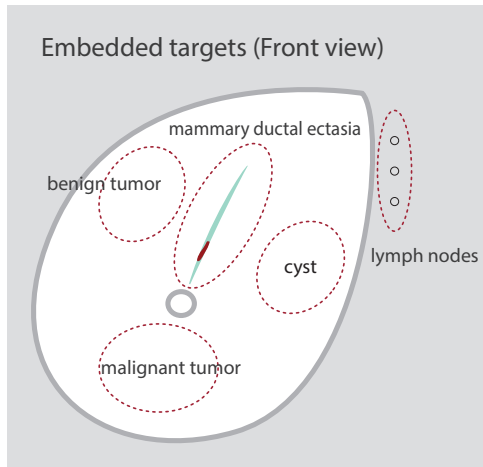
3 After training



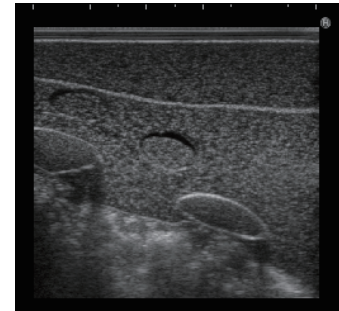
Wipe the remaining gel completely with wet cloth. If remaining gel gets dried up on the body, it will be irremovable.

Caution

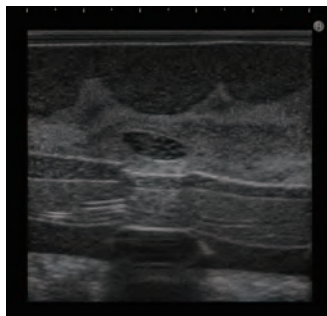
Don't mark on the phantom with pen or leave printed materials contacted on its surface. Ink marks on the phantom will be irremovable.



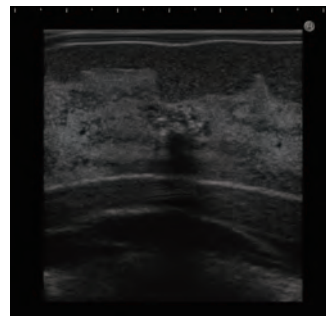
Mammary Ductal Ectasia



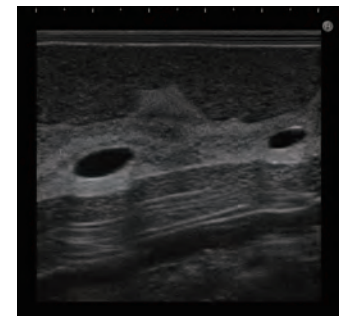
Lymph Nodes



Benign Tumor



Malignant Tumor



Cyst

The contents of this manual are subject to change without prior notice.

No part of this instruction manual may be reproduced or transmitted in any form without permission from the manufacturer. Please contact manufacturer for extra copies of this manual which may contain important updates and revisions.

Please contact manufacturer with any discrepancies, typos, or mistakes in this manual or product feedback. Your cooperation is greatly appreciated.

KYOTO KAGAKU co.,LTD

URL:<http://www.kyotokagaku.com> e-mail:rw-kyoto@kyotokagaku.co.jp

■ **Main Office and Factory**

15 Kitanechoya-cho Fushimi-ku Kyoto 612-8388, Japan
Telephone : 81-75-605-2510
Facsimile : 81-75-605-2519

■ **KyotoKagaku America Inc.**

USA,Canada,and South America
3109 Lomita Boulevard, Torrance, CA 90505 ,USA
Telephone : 1-310-325-8860
Facsimile : 1-310-325-8867