

US-1B

Ultrasound Examination Training Model "ABDFAN"

Production supervision:

Junji Machi,MD,PhD

University of Hawaii at Manoa and Kuakini Medical Center

Caution:

Don't mark on the phantom with pen or leave printed materials contacted on its surface.

Ink marks on the phantom will be irremovable.

Instruction Manual

Contents



● Please read before training

General information P. 1

● Preparation

1. Before training P. 2

● Training

2. Training session P. 2

3. After training P. 2

Unique high-fidelity ultrasound phantom facilitates effective training in abdominal ultrasound scanning with your own clinical devices.

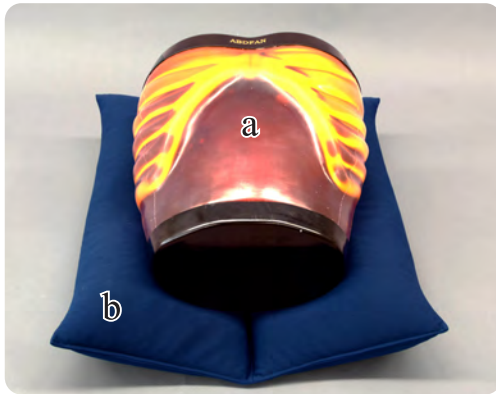
Simulated lesions embedded as targets provide wider educational opportunities.

● Features

- Inanimate tool for training of a novice to demonstration by an expert.
Any ultrasound device with a convex probe can be used for the phantom.
- Detailed hepatobiliary, pancreatic and other abdominal anatomy meeting requirement for excellent training; Eight Couinaud's hepatic segments can be localized.
- Various simulated lesions including biliary stones and cysts, solid tumors (hypoechoic, hyperechoic and target-appearance) in the liver, pancreas, spleen and kidneys.
- Near real-size organs, structures and abnormal lesions.
- Durable long-life phantom materials.

Set includes

Before your first use, please ensure that you have all components listed below.



- a. Ultrasound abdominal phantom 1
the liver (segmental anatomy, portal and hepatic venous systems, ligamentum teres and ligamentum venosum), biliary tract (gallbladder, cystic duct, intrahepatic and extrahepatic bile ducts), pancreas (pancreatic duct), spleen, kidneys, detailed vascular structures (aorta, vena cava, celiac artery and its branches, portal vein and its branches, superior mesenteric vessels, renal vessels, etc)
- b. Positioning pillow 1
- c. DVD Tutorial Manual 1

The setting of supine position and the lateral position is possible using a positioning pillow.



⚠ DOs and DON'T s

DO s

Handle with care
The materials for phantom and models are special composition of soft resin. Please handle with care at all times.

Cleaning and care

Please clean the phantom completely every time after you finish the training.
The remaining lubricating gel may deteriorate the phantom.

Keep the training set at room temperature, away from heat, moisture and direct sunlight.

DON'Ts

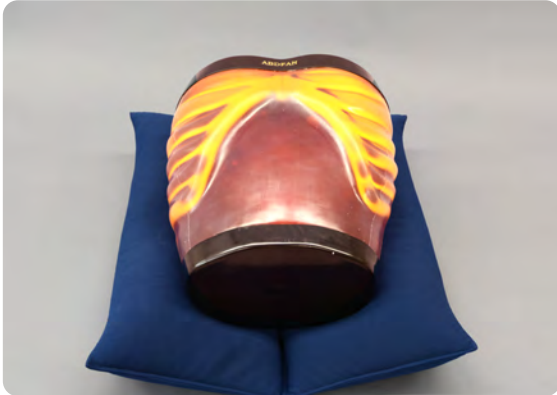
Never wipe the phantom or models with thinner or organic solvent.

Don't mark on the phantom with pen or leave printed materials contacted on their surface.
Ink marks on the models will be irremovable.

Please note: The color of the phantom may change over time, though, please be assured that this is not deterioration of the material and the ultrasonic features of the phantom stay unaffected.

This phantom has a thin layer of coating for protective purposes which may cause minor wrinkling. However, it has no effect on the ultrasound image.

1 Before training



1. Set the phantom stably on the positioning pillows.



2. Spread lubricant gel on the phantom body.

2 Training session



The phantom can be scanned with actual ultrasound devices.

* The map of simulated targets is on the backside of this manual.

Examples of ultrasound images



Duplication lesion



Low echo target



Gallstone



High and non echo targets

3 After training



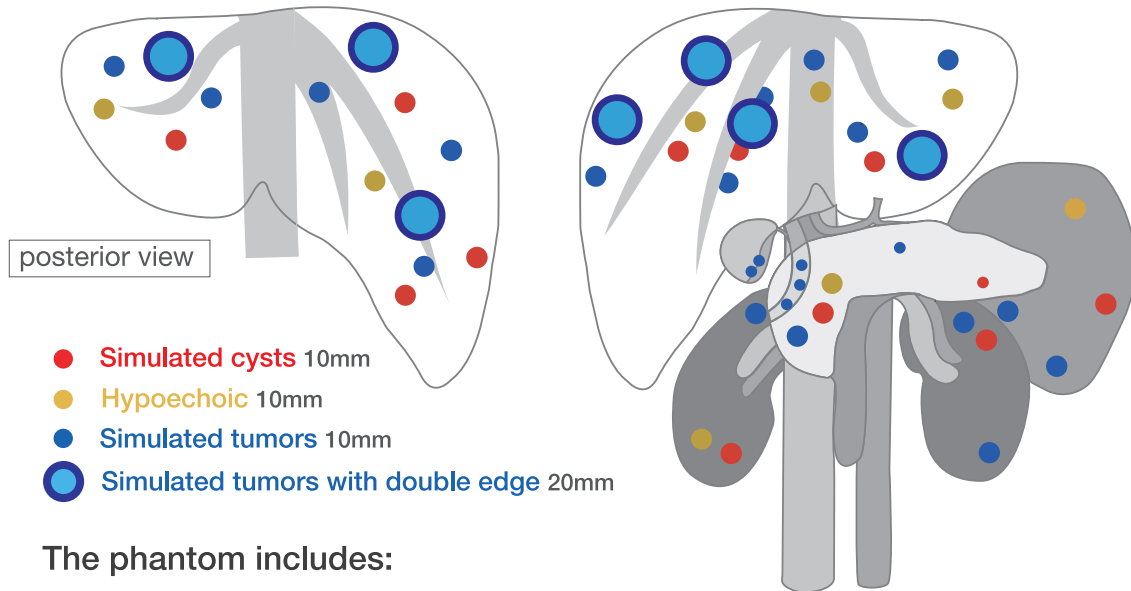
Wipe the remaining gel completely with wet cloth. If remaining gel gets dried up on the body, it will be irremovable.



Caution

Don't mark on the phantom with pen or leave printed materials contacted on its surface. Ink marks on the phantom will be irremovable.

Simulated lesions in liver, pancreas, kidney, spleen, gallbladder



posterior view

- **Simulated cysts** 10mm
- **Hypoechoic** 10mm
- **Simulated tumors** 10mm
- **Simulated tumors with double edge** 20mm

The phantom includes:

the liver
(segmental anatomy, portal and hepatic venous systems, ligamentum teres and ligamentum venosum),

biliary tract
(gallbladder, cystic duct, intrahepatic and extrahepatic bile ducts),

pancreas
(pancreatic duct),

spleen,
kidneys,
detailed vascular structures
(aorta, vena cava, celiac artery and its branches, portal vein and its branches, superior mesenteric vessels, renal vessels, etc)

The contents of this manual are subject to change without prior notice.

No part of this instruction manual may be reproduced or transmitted in any form without permission from the manufacturer. Please contact manufacturer for extra copies of this manual which may contain important updates and revisions.

Please contact manufacturer with any discrepancies, typos, or mistakes in this manual or product feedback. Your cooperation is greatly appreciated.

 **KYOTO KAGAKU co.,LTD**

URL:<http://www.kyotokagaku.com> e-mail:rw-kyoto@kyotokagaku.co.jp

■ Main Office and Factory

15 Kitanechoya-cho Fushimi-ku Kyoto 612-8388, Japan
Telephone : 81-75-605-2510
Facsimile : 81-75-605-2519

■ KyotoKagaku America Inc.

USA,Canada,and South America
3109 Lomita Boulevard, Torrance, CA 90505 ,USA
Telephone : 1-310-325-8860
Facsimile : 1-310-325-8867