

US-14a

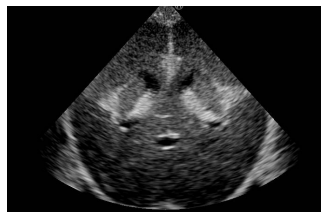


Ultrasound Neonatal Head Phantom (Normal Type)

World's first ultrasound neonatal head phantom with key anatomies

Product Supervision

Charlotte Henningsen,
MS, RT(R), RDMS, RVT, FSDMS, FAIUM
Chair & Professor - Sonography Department
Adventist University of Health Sciences



FEATURES

Cranial or head ultrasound is one of the most difficult scanning skills, and trainees have few opportunities for training. This head model features an accurate depiction of a newborn's cerebral anatomy, and facilitates a realistic user experience with its life-like soft touch.

SKILLS

- Scanning of brain anatomy in sagittal (angled parasagittal), coronal and transverse planes via any fontanel
- Palpation of anterior, posterior and mastoid fontanels

ANATOMY

| | | |
|--------------------|-------------------|------------------|
| skull | cerebrum | third ventricle |
| anterior fontanel | cerebellum | fourth ventricle |
| posterior fontanel | brain-stem | septum lucidum |
| mastoid fontanels | lateral ventricle | |

DESCRIPTIONS

SPECIFICATIONS

Size: W13 x D13 x H17 cm
W5.1 x D5.1 x H6.7 inch

Weight: 1.5kg / 3.3lbs

SET INCLUDES

- 1 ultrasound phantom
- 1 pillow
- 1 storage case
- 1 instruction manual

MATERIALS

Polyurethane elastomer
Latex free

* Ultrasound scanner is not included.

US-14b



Ultrasound Neonatal Head Phantom (Abnormal Type)

World's first ultrasound neonatal head phantom with hydrocephalus

Product Supervision

Charlotte Henningsen,
MS, RT(R), RDMS, RVT, FSDMS, FAIUM
Chair & Professor - Sonography Department
Adventist University of Health Sciences



FEATURES

This head phantom is designed to demonstrate Hydrocephalus. The shape of the skull is altered due to intracranial pressure.

SKILLS

- Scanning of brain anatomy in sagittal (angled parasagittal), coronal and transverse planes via any fontanel
- Palpation of fontanels

ANATOMY

| |
|---------------------------------|
| skull |
| anterior fontanel |
| posterior fontanel |
| hypertrophied lateral ventricle |

DESCRIPTIONS

SPECIFICATIONS

Size: W13 x D14 x H20 cm
W5.1 x D5.5 x H7.9 inch

Weight: 1.5kg / 3.3lbs

SET INCLUDES

- 1 ultrasound phantom
- 1 pillow
- 1 storage case
- 1 instruction manual

MATERIALS

Polyurethane elastomer
Latex free

* Ultrasound scanner is not included.