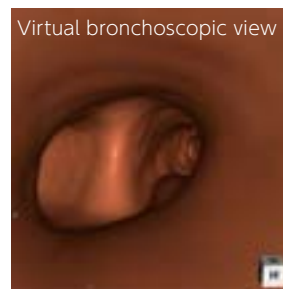
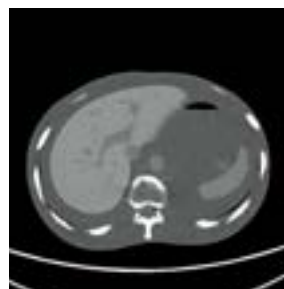


PH-4 | 41324-040

CT Torso Phantom CTU-41



A one-piece anthropomorphic torso phantom with anatomical structures allows various CT approaches including helical scanning



FEATURES

- | One-piece structure of the phantom facilitate study in volume CT scan including helical scan.
- | The phantom can be used for alignment in Image Guided Radiation Therapy (IGRT)

APPLICATIONS

ANATOMY

- | Synthetic bones with cartilage
- artificial skull, vertebrae, clavicles, ribs, sternum, scapula, coxal bones, femurs

Internal organs		Hounsfield Number	Internal organs		Hounsfield Number	
Soft tissue around each organ		8	Liver	Whole	70	
Brain	Brain	40		Vein	40	
	Ventricles	10	Gallbladder		20	
Eye balls		20	Pancreas		30	
Aorta		40	Spleen		50	
Vena Cava		40	Kidney	Whole	30	
Trachea	Up to the first branch	-800			Vein	40
	The second -the third branch	8			Urethra	10
Heart		40	Urethra		10	
Pulmonary Blood Vassal		8	Urinary Bladder		10	
Cartilage in Costae		90				

DESCRIPTIONS

SET INCLUDES

- 1 CT torso phantom
- 1 set of sample X-ray data (DVD)
- 1 storage case manual

MATERIALS

Soft tissue: urethane based resin (density: 1.06)
 Synthetic bone: epoxy resin (density: 1.31)

SPECIFICATIONS

Phantom height: 100 cm / 39.4 in
 Phantom weight: 45 kg / 99 lb
 Packing size: W118 x D63 x H47 cm / W46.5 x D24.8 x H18.5 in
 Packing weight: 52 kg / 114 lb