

PH-2B | 41350-200

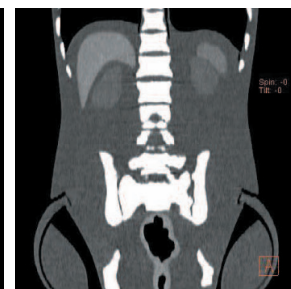
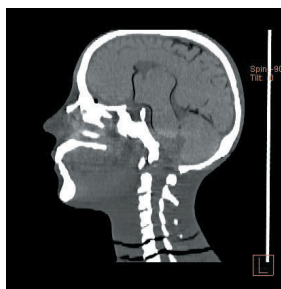
CT Whole Body Phantom "PBU-60"



A unique, life size whole body phantom for CT provides a variety of educational application as well as visual evaluation in finding out optimal scanning conditions



SHOW MORE!



FEATURES

- The phantom includes full internal organs with close-to-human HU for each.
- Radiology absorption and HU approximate to human body
- Main joints have close-to human articulation
- Phantom can be disassembled into 10 individual parts

APPLICATIONS

- CT
- Plain X-ray
- Basic patient positioning

ANATOMY

Full internal organs	Internal organs		HU number at 80KeV	
	Internal organs		Internal organs	HU number at 80KeV
Bony structure	Synthetic skull		Portal and hepatic veins	40
	Cervical vertebrae		Pancreas	30
	Vertebrae		Kidneys	30
	Clavicles		Gallbladder	20
	Ribs		Spleen	50
	Sternum		Seminal vesicle	25
	Scapula		Aorta	40
	Coxal bones		Cava	70
	Femurs		Ureter	ureteral wall: 30 / inside: 10
			Urinary bladder	10
			Prostate	50
			Rectum	rectum wall: 70 / inside: -800
			Sigmoid Colon	colon wall: 70 / inside: -800

DESCRIPTIONS

SET INCLUDES

- 1 whole body phantom
- 1 head supporter
- 1 flat head screwdriver
- 1 set of sample CT/X-ray data (DVD) manual

SPECIFICATIONS

Packing size:
 Phantom height: W92 x D57 x H38 cm/W36 x D22 x H15 in
 165 cm W90 x D63 x H22 cm/W35 x D25 x H8.7 in
 65 in W89 x D57 x H16 cm/W35 x D22 x H6.3 in
 Phantom weight: 50 kg / 110 lb
 Packing weight: 80 kg / 176 lb

MATERIALS

Soft tissue: urethane based resin (density: 1.06)
 Synthetic bone: epoxy resin (density: 1.31)
 Skull: epoxy resin (density: 1.11)
 *Phantom has no metal parts or liquid structure

OPTIONAL PARTS

- 41363-070 storage cases (consist of 2 boxes)
- 41350-200-16 body plates for PH-2/2B (BMI 32)
- 41350-200-17 body plates for PH-2/2B (BMI 40)

PUBLICATION REFERENCES

Kim, S., & Jung, H. (2013). A Study on Performance of Low-Dose Medical Radiation Shielding Fiber (RSF) in CT Scans. International Journal Of Technology, 4(2), 178-187. doi:10.14716/ijtech.v4i2.107

Storage case P.12 ▶