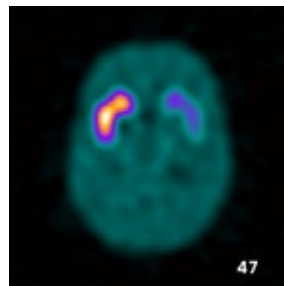
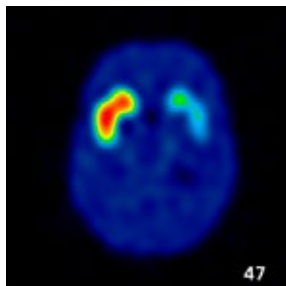


PH-64 | 41928-000

PET/ SPECT Brain Phantom



Nucleus and the caudate nucleus for I-123 DatSCAN



SHOW MORE!



FEATURES

- Anthropomorphic head phantom simulates the absorption and scatter characteristics of head and skull
- RI solution can be injected to striatum and putamen

APPLICATIONS

- SPECT
- DatSCAN

ANATOMY

Brain ventricle	Putamen
Striatum	Cerebrum
Caudate nucleus	Skull

	Volume
Cerebrum	1038.90 ml
Putamen (right)	5.46 ml
Putamen (left)	6.7 ml
Caudate nucleus (right)	5.38 ml
Caudate nucleus (left)	5.09 ml

DESCRIPTIONS

SET INCLUDES

- 1 head phantom (separated at the top)
- 1 brain container
- 1 storage case manual

MATERIALS

Striatum case: epoxy resin
 Brain ventricle: polyurethane
 Brain case: polyurethane
 Artificial bone: epoxy resin
 Soft tissue: polyurethane

SPECIFICATIONS

Phantom size:
 W20 x D21 x H33 cm
 W7.8 x D8.2 x H13 in
 Phantom weight:
 5.5 kg/ 12.1 lb

PH-53 | 41918-000

Brain Phantom IB-20 advanced



SHOW MORE!



APPLICATIONS

- SPECT, PET

EVALUATION PARAMETERS: common with IB-20

DESCRIPTIONS

SET INCLUDES

- 2 bone scatterer cases
 adult male: equivalent HU750
 elderly female: equivalent HU530
- 1 brain striatum phantom
- 1 screwdriver

- 1 velcro tape
- 1 petroleum jelly
- 1 storage case manual

SPECIFICATIONS

Phantom size:
 W21 x D15 x H8 cm
 W8.2 x D5.9 x H3.1 in

MATERIALS

Brain striatum: epoxy resin
 Brain striatum container: urethane resin
 Cerebral ventricle: urethane resin
 Brain stratum phantom cover: acrylic
 Bone scatterer case: epoxy resin

PH-27 | 41530-000

Brain Phantom IB-10



SHOW MORE!



APPLICATIONS

- SPECT, PET

EVALUATION PARAMETERS

- Homogeneity evaluation
- Cross calibration
- Gamma ray absorption rate by a skull
- Detectivity of gray matter and white matter
- Spatial resolution of negative images (IB-10 set only)
- Radioactive concentration and linearity of SPECT value (IB-10 set only)

DESCRIPTIONS

SET INCLUDES

- 1 brain unit
- 1 skull container unit
- 1 J-Jack phantom
- 1 section phantom

MATERIALS

Acrylic resin/ urethane resin

SPECIFICATIONS

Phantom size:
 W21 x D15 x H8 cm/ W8.2 x D5.9 x H3.1 in

